

SolidPartitions

— VERSATILITY BY DESIGN

About Us

From our founding in 2006 to today, Solid Partitions has maintained the same business model: offer high-quality, accurate products at competitive prices.

Our in-house operations and custom design procedures ensure quick order turnaround times and design customization limited by only your imagination.

Our High-Density Polyethylene (HDPE) products boast:

- High-impact strength
- Durable, textured finishes
- Odor, chemical, and stain resistance
- Minimal moisture absorption
- Solid color throughout
- 25-year warranty

P: (414) 763-0029 | F: (414) 763-0393

info@solidpartitions.com | solidpartitions.com

W233 N2830 Roundy Circle W | Pewaukee, WI 53072



Headrail-Braced



Ceiling-Hung



Floor-to-Ceiling





BLACK



GREY



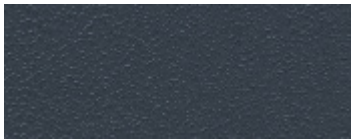
CHARCOAL



BONE



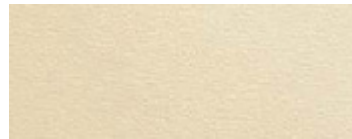
SHALE



SLATE



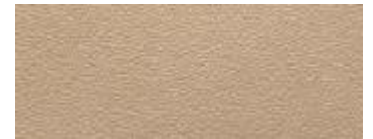
WHITE



LINEN



BEIGE



MOCHA



FOSSIL



HUNTER



PAISLEY



BLUEBERRY



BURGUNDY



FROST GRANITE



MOONLIGHT GRANITE



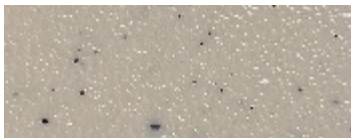
CANYON GRANITE



GLACIER GREY



SANDCASTLE



SANDSTONE



HAMMERED STAINLESS



HAMMERED NICKEL



HAMMERED BRONZE



BRUSHED STAINLESS



BRUSHED NICKEL



BRUSHED BRONZE



STAINLESS (EX)



BLACK (EX)

Color may vary due to print process. Contact us for a sample.



Hardware

Hinges

- Aluminum wraparound (standard)
- Stainless steel vault
- Integral
- Stainless steel continuous
- Aluminum continuous

Door Hardware

- Aluminum (standard)
- Stainless steel
- Indicator latch
- Zero sight – Continuous privacy package
- Zero sight – Shiplap privacy package

Brackets

- Aluminum stirrup (standard)
- Stainless steel stirrup
- Aluminum U – Channel
- Stainless steel U – Channel
- Aluminum CWB
- Stainless steel CWB
- Plastic CWB

Pilaster shoes

- Stainless steel (standard)
- Plastic

Fasteners

- Stainless steel security torx (standard)

For additional hardware information, contact us by phone at (414) 763-0029 or visit us at solidpartitions.com.

